

# College of Veterinary Technology





# College Values



# Program History



- Initial accreditation in 1978 for campus program

- First distance education program which became accredited in 1995



- BAS program began fully online in 2004

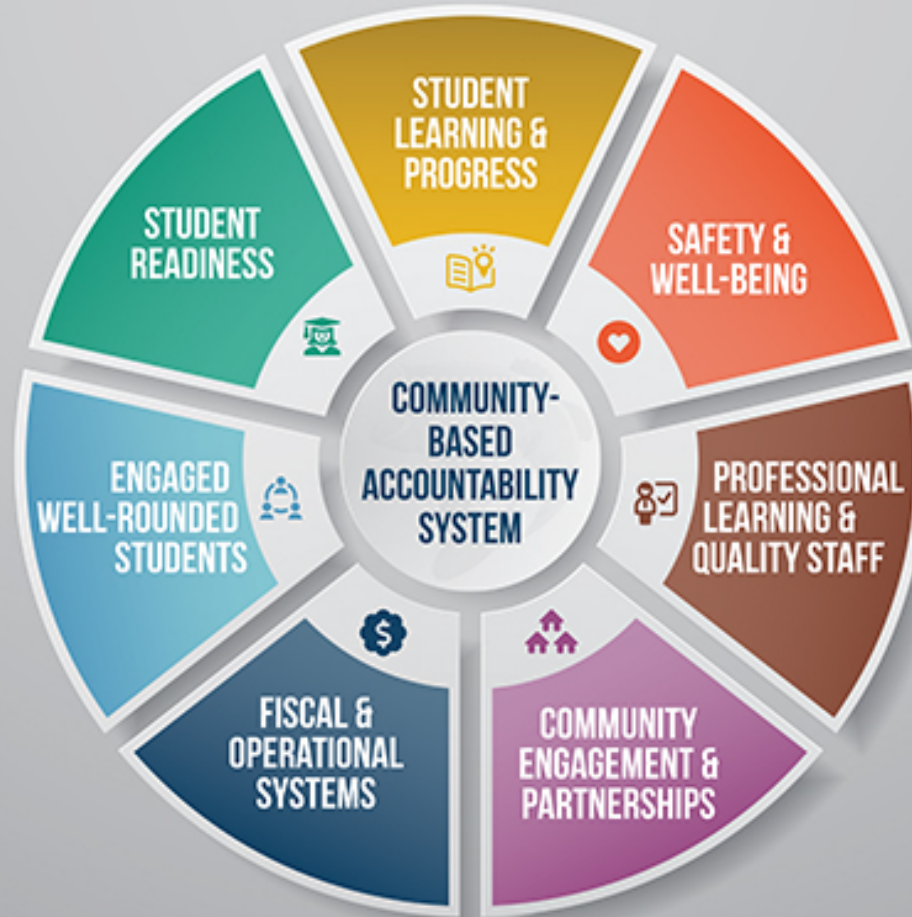
- AAHA accredited since 2014

# Program Statics – AS Program

- Over 400 students enrolled
- 30-35 campus students admitted every August and January
- 30-70 online students admitted every August, January and May
- Retention 80%
- Graduation 95% - after first year
- VTNE pass rates :
  - Campus 85%
  - Online 100%









# Student Success Course - Readiness

- Veterinary Technology Student Success Course
  - MyCourses training
  - Student readiness assessment
  - MyLearning Plan
  - Academic Honesty
  - Accessibility Resources
  - Tutoring Information
  - Program Specifics
  - Eportfolio

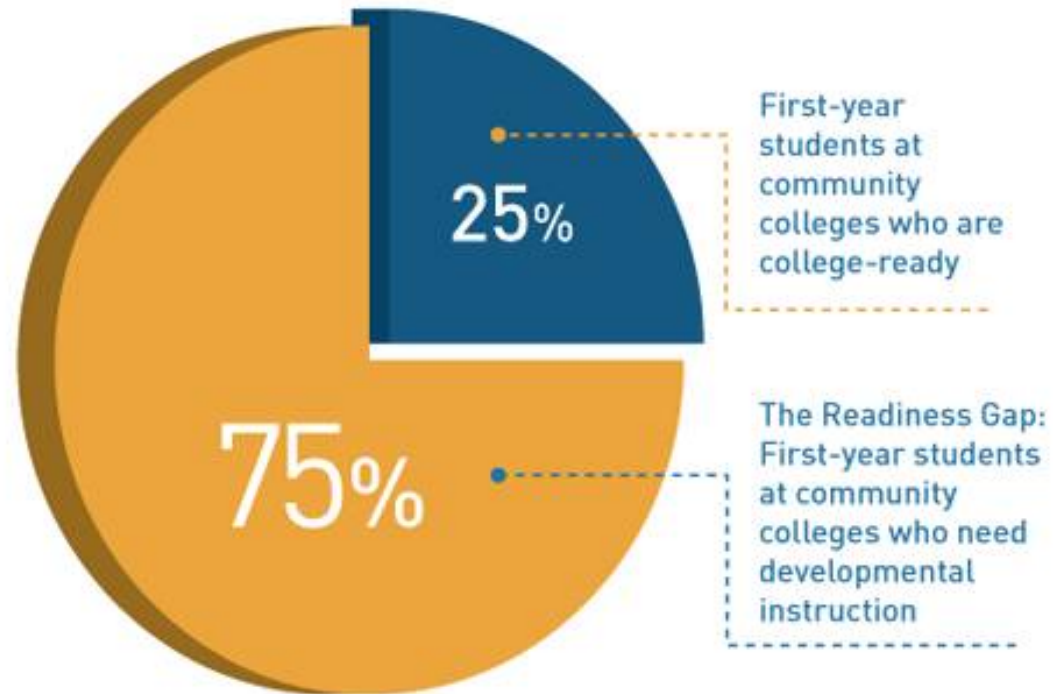




# Student Readiness

## The Readiness Gap at Community Colleges

About one-fourth of entering community college students are prepared for college-level studies. The remaining 75 percent need remedial work in English, mathematics, or both.



**SOURCE:** The National Center for Public Policy and Higher Education and the Southern Regional Education Board, *Beyond the Rhetoric: Improving College Readiness Through Coherent State Policy* (Washington, DC: The National Center for Public Policy and Higher Education, June 2010), p. 2.



# Readiness Assessment

**SPC** St. Petersburg  
College



Jordan Beckner

**Children** none

**Preferred classes** 5 classes;  
Online;

**Career path** Health Sciences and  
Veterinary Technology

**Work hours** 31-40 hours

**Goal** Further advance in my career

**Motivation** "If you want to make a  
permanent change, stop focusing on  
the size of your problems and start  
focusing on the size of you!" T. Harv  
Eker

## Student Message

(What students see)

You're off to a good start, Jordan.

You feel ready to use technology for your classes. You're motivated. You feel you have things in place in your life so you can devote time to school.

Working and taking classes is often necessary. If you can't control the number of hours per week that you work you should plan your course schedule to fit your work schedule. Generally speaking, in a 16-week term, for each 3 credit class you will spend 3 hours per week in the classroom and you will be expected to spend 6 hours in preparation and studying per week. So 9 hours for 1 course.

8-week courses are the same amount of work in half the time! A 3 credit course will require 18 hours per week dedicated to school work.

There are some areas that you should work on to improve your chances for success: Study skills, Ready to learn, and Time management. Click on the Caution ⚠️ to learn more about areas of improvement and how you can be Green-to-Go 🟢.

You look like you're ready with Technology, Motivation, and Support and Space, but it never hurts to review! Click on the Green-to-Go 🟢 to get more information.

## Student Readiness

✉ Email Student

### Resources

⚠️ **Study skills**  
[View Resources](#)

✔️ **Technology**  
[View Resources](#)

⚠️ **Ready to learn**  
[View Resources](#)

✔️ **Motivation**  
[View Resources](#)

⚠️ **Time management**  
[View Resources](#)

✔️ **Support and Space**  
[View Resources](#)



SPC MyCourses Support & Student Services Hub

Search

Print

Download PDF

MyCourses Support

Academic Continuity Resources: Student Toolkit

MyCourses

Information for Online Students

Student Services & Support

Technical Support

College Skills

College Skills: Overview

Student Readiness Tool

FREE online courses prepare you for college

Study Skills


Study Strategies Toolkit

Technology

Ready to Learn

Motivation

Time Management



# Study Skills

*Good study skills can be learned at any age*

*Good study habits lead to success. Not intelligence. Not luck. Effective and efficient studying will help you succeed and these tips will help you build your study skills.*


## Featured Resource

### Time Saving Reading Strategies

Do you find that you have a hard time remembering what you read? Do you wish you could get more out of your readings for class? Learn more about a reading strategy that will save you time and increase your knowledge of the material.

Video

Transcript







ATE2638L Animal Lab Procedure Lab Mode:(Online)  
Class#:209/760 Instructor:Gorham

- Faculty Tools
- Grade Check
- Last Login
- Student Persona
- Grade Preview
- Submit Final Grades
- Quick SParC
- More



Passed an Online Course: **Yes**

Completed Intro to MyCourses: **Yes**

Course Repeat: **Yes**

First Time Ever In College: No



# Learning Plan

## Year: 2020 - 2021

Fall I			Spring II			Summer III			Yr Cr
Course Title	Course#	#Cr	Course Title	Course#	#Cr	Course Title	Course#	#Cr	18
Animal Anatomy	ATE 1110	3	Veterinary Office Procedures	ATE 1311L	1	Animal Physiology	ATE 1211L	3	
Animal Anatomy Lab	ATE 1110L	1	Veterinary Clinical Prac Lab I	ATE 1650L	1	Veterinary Clinic Prac Lab II	ATE 1654L	1	
Veterinary Med Terminology	ATE 1741	1	Veterinary Work Practicum I	ATE 1943	1	Veterinary Work Practicum II	ATE 1944	1	
Small Animal Breeds & Behavior	ATE 2050C	2	Animal Nursing	ATE 2631	3				
Total Credits: 7			Total Credits: 6			Total Credits: 5			

## Year: 2021 - 2022

Fall I			Spring II			Summer III			Yr Cr
Course Title	Course#	#Cr	Course Title	Course#	#Cr	Course Title	Course#	#Cr	18
Animal Anesthesia	ATE 2611	3	Prof Development Seminar	ATE 2501C	1	Animal Lab Procedures I	ATE 2638	3	
Animal Nursing & Medicine I b I	ATE 2651L	2	Animal Medicine	ATE 2612	3	Animal Lab Procedure Lab	ATE 2638L	2	
Animal Emergency Medicine	ATE 2710	1	Animal Nursing & Medicine I b II	ATE 2653L	2				
Veterinary Work Practicum III	ATE 2945	1							
Total Credits: 7			Total Credits: 6			Total Credits: 5			

## Year: 2022 - 2023

Fall I			Spring II			Summer III			Yr Cr
Course Title	Course#	#Cr	Course Title	Course#	#Cr	Course Title	Course#	#Cr	16
Lg Animal Clinical & Hsg Skl	ATE 1636	2	Animal Pharmacology	ATE 2634	3	Laboratory Animal Medicine	ATE 1671L	1	
Animal Lab Procedures II	ATE 2639	3	Lg Animal Clinical & Hsg Skls Lb	ATE 2656L	1	Avian and Exotic Pet Medicine	ATE 2722	2	
Animal Lab Procedures Lab II	ATE 2639L	2	Large Animal Diseases	ATE 2661	1	Veterinary Work Practicum IV	ATE 2946	1	
Total Credits: 7			Total Credits: 5			Total Credits: 4			

Cumulative Credits									52
--------------------	--	--	--	--	--	--	--	--	----

PRINT



# Eportfolio

Shannon Garrison



Student  
Success

[ATE  
1110L](#)

[ATE  
1311L](#)

[ATE  
1412C](#)

[ATE  
1650L](#)

[ATE  
1654L](#)

## Student Success

### Rabies

 [Rabies](#)


### Signature Page

 [Signature Page](#)

### Clinical Hours Requirement/Attendance Quiz

 [Clinical Hours Requirement/Attendance Quiz](#)

### Testing Policy Quiz

 [Testing Policy Quiz](#)



# Academic Integrity

## The Whole Internet Truth



The College of Veterinary Technology takes academic integrity very seriously as patient lives could be endangered by any type of indiscretion. Please review the attached Board of Trustee Rules as well as the following consequences should any violation occur.

Academic Integrity Policies [http://web.spcollege.edu/botrules/P4/P4\\_461.doc](http://web.spcollege.edu/botrules/P4/P4_461.doc)

Honor Code [http://web.spcollege.edu/botrules/R4/4\\_461.doc](http://web.spcollege.edu/botrules/R4/4_461.doc)

### Consequences for Violations of the Academic Honesty Policy

#### Study questions, resubmission of minor assignment, or submission of work not own (copy/paste)

First offense – zero for assignment and reported to database for violation of honesty

Second offense – zero for assignment, F for course and suspension for one semester.

#### Resubmission of major assignments –

First offense – Zero for assignment, F for the course and reported to database for violation of honesty

Second offense – F for course and suspension for one semester.

#### Submission of work not own on major assignments, integrity violation on any test or quiz, or falsification of clinical documents

First offense – F for course and suspension for one semester

Second offense – Dismissed from program





# Professional Learning and Quality Staff

- State of the Art Building
- Faculty Empowering Students to Succeed







- Clinical Coordinator



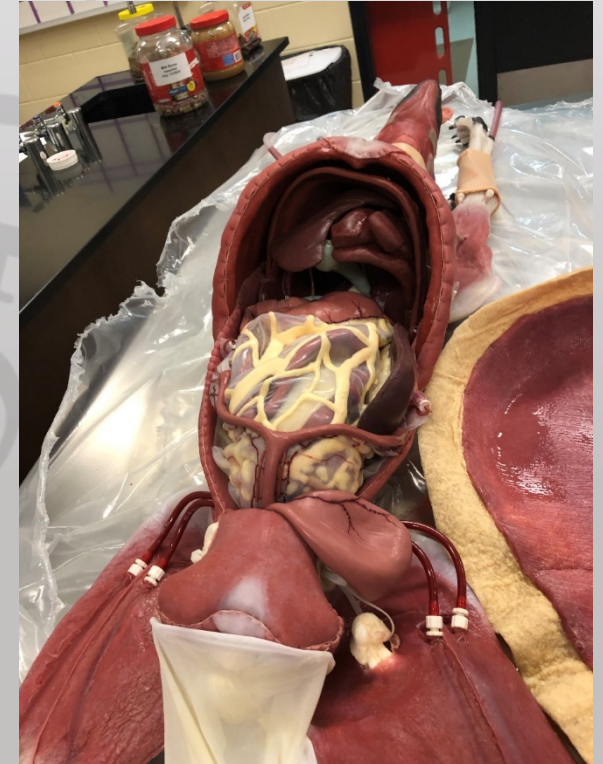
## Fall 2020 Veterinary Technology Clinical Documents

### Faculty Tools

[Grade Check](#)[Last Login](#)[Student Persona](#)[Grade Preview](#)[Submit Final Grades](#)[Quick SPaC](#)[More](#)



# Resources for learning – Money??











# Student Learning

- Tutoring sessions
- Drop in Zoom meetings for lower success classes – Milestones development academic and student services
- Workshops for difficult skill online courses





# Engaged Well Rounded Students

- "Off on the Right Paw" Student Mentoring
- Animal Advocate







# Growth - Fear Free



## FAS Scale (Fear, Anxiety, and Stress Scale)



### Stop

- Little to no interest in treats, toys, and/or attention
- Fight, freeze, or flight response
- Sedation + pharmaceutical/nutraceutical PVP

### Caution

- Moderate interest/disinterest in treats, toys, and/or attention
- Fidgeting, difficulty settling
- Pharmaceutical/nutraceutical PVP

### Go

- Readily accepts treats, toys, and/or attention
- Relaxed or mild signs of FAS
- Nutraceutical PVP



### High FAS

Level 5 Severe signs of FAS with aggression such as growling, lunging, barking, hissing, snarling, and/or snapping. Intolerant of procedures.

Level 4 Severe signs of FAS without aggression, such as immobility, fidgeting, escape behavior, dilated pupils, excessive panting (dog), increased respiratory rate, trembling, tense closed mouth, ears back, tailed tuck or thrashing (cat). May or may not be accepting any types of reinforcers. Not interested in interacting with team members and may be showing active avoidance (moving away).

### Moderate FAS

Level 3 Displays more than 2 moderate signs of FAS occurring more than 4 times in a minute. May refuse reinforcements for brief moments. Might take treats roughly at times. May also be hesitant to interact with team members but not actively avoiding team members.

Level 2 Displays 1 to 2 moderate signs of FAS, such as ears slightly back or to the side, tail down, furrowed brow, slow movements or overly attention seeking, and/or panting with a tighter mouth (dog), occurring 4 or less times a minute. Readily accepts reinforcement (treats, toys, and attention). Still soliciting social interactions with team members.

### Low FAS

Level 1 Displays 1 or 2 mild signs of FAS, such as lip licking, avoids eye contact, turns head away without moving away, lifts paw, or partially dilated pupils, and/or panting but commissures of lips are relaxed, occurring less than 4 times a minute. Interested in reinforcers (treats, play, attention) and chooses to interact with the team members

Level 0 No signs of FAS. Pet displays relaxed body language and solicits social interactions with team members.

©2017 Fear Free. Written by Kenneth Martin, DVM, DACVB and Debbie Martin, LVT, VTS (Behavior).

**Anytime an animal is being worked with, record FAS scale in the animal's medical record. Example: FAS-1**

Animals who score **Green** for FAS:  
Can be used by all students.

Animals who score **Yellow** for FAS: Students must pause and discuss a plan of action with their instructor. Mark this animal's record and cage card with "Go Slow" and the methods that reduce FAS.

Animals who score **Red** for FAS: Students must stop working with the animal immediately and have the instructor return the animal to its cage or sedate/anesthetize the animal. Mark this animal's record and cage card with "Caution". If this animal routinely scores Red for FAS, it must be returned to its place of origin as it is not safe for students to work with. (rev. 9.26.17)





# Integrity and Wellbeing

- Increased Mental Health Awareness
- Program Specific Early Alert System





# Accommodation Coordinator



## Essential Functions for Veterinary Nursing

The field of veterinary nursing is both intellectually and physically challenging.

The American with Disabilities Act (ADA) and Section 504 of the Rehabilitation Act of 1973 ensure that qualified applicants have the ability to pursue program admission. However, all students must meet the essential skills and technical standards to perform functions required of the St Petersburg College's Veterinary Nursing program and profession. Every student will be held to the same standards with or without reasonable accommodations. Due to the extensive nature of the skills required by the American Veterinary Medical Association (AVMA) for the program accreditation and the essential functions listed, reduced distraction testing areas and extended time accommodations will not be provided for any laboratory course exams.

## Manual Dexterity and Mobility

Students must:

- Be able to move his/her entire body a distance of no less than three meters within two seconds of a signal to do so, to move rapidly from danger while handling animals in confined spaces.
- Possess fine motor movements in order to perform the *essential functions* of the profession. This includes the dexterity to manipulate small equipment, adjust resistance on equipment, hold hooves while cleaning and evaluating, manage syringes, catheters, and common surgical instruments.
- Possess tactile ability necessary for physical assessment and to perform nursing duties in a timely manner. This includes performing palpation during physical exams; administering oral, intramuscular, subcutaneous, and intravenous medication; insert and remove tubes; collect organic samples from live animals and perform wound care.
- Possess the ability to palpate and interpret findings, i.e. palpation of pulses, lymph nodes or trachea to determine proper endotracheal tube size.
- Be able to hold surgical instruments in one hand and perform fine movements with such instruments. This includes ability to assist in holding of hemostats or other instruments while assisting in surgery; induce and monitor general anesthesia in an animal patient; place intravenous and urinary catheters without assistance.
- Be able to hold, manipulate, or tie materials ranging from a cloth patch to a very fine string. This includes the ability to hold and manipulate a surgical sponge; tie a 00 silk suture; endotracheal intubation; intravenous injection; catheterize animals to obtain sample of urine and/or other body fluids; apply bandages without assistance.





# Community Engagement

- Partnership with Pinellas County Animal Services, SPCA of Tampa Bay, Humane Society of Tampa Bay, Dancing Goat and Hammer Hammock







# Community Focus

- Community Open House









# Growth and Empowerment









It's a beautiful thing when career and passion come together

- When you feel like your career is not a "JOB," rather it is a passion...when your passion and drive to do what you love wakes you every morning instead of an alarm clock, I can honestly say that is when you know that you are right where you are supposed to be doing EXACTLY what you were put on this earth to do! There's nothing that brings us greater joy than witnessing these moments as they happen.....

- Lisa Cicio CVT - Ophthalmology Nurse
- Jupiter Pet Emergency & Specialty Center  
(graduate AS '06 BAS '09)







Gorham.tricia@spcollege.edu

